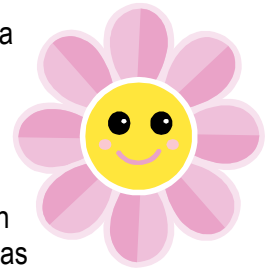


# A HAPPY NEW YEAR

## St. Luke's Catholic Primary School Spring 1<sup>st</sup> Half Term Newsletter 2017

Welcome back to 2017 and a Happy New Year to all our families. I hope you all had a wonderful Christmas and Santa brought everything your heart desired!



### THANKS

A huge "thank you" to all our families who supported our many fundraising activities before Christmas. The Christmas Fayre was a great success and raised £683.46. The Junior children went carol singing at Tesco on several occasions and raised funds for our charities as well as school fund. All monies raised help us to provide extras for the children like gifts and parties and also enable us to subsidise school trips, which in turn helps us to keep the cost down for yourselves. We also contribute to local and national charities on behalf of the children of St. Luke's. So once again, a huge THANK YOU!

### Attendance

A big "Well done" and thank you to all our children and families for their excellent efforts with attendance and being punctual last term. The lifestyle benefits of your efforts continue to have great impact on our children and school. Well done to the certificate and prize winners for your excellent achievements.

### Knowsley Foodbank

A big thank you to all our children and families who generously contributed to the Knowsley Foodbank. The organisers were delighted with our donation.

### Inhalers

If your child has an inhaler, or any other medication which must be kept in school, could you please check that it is still in date? We cannot allow children to use an inhaler/medication that is past its 'use by' date.

### Gymnastics Classes

The children in Yr 3 and Yr 4 will continue to benefit from specialist coaching in gymnastics every Thursday afternoon. The children learn many skills including balances, rolls and jumps.



### Child Care

We continue to offer child care places for all children including Nursery up to 5.30 p.m. each school day. These facilities have been OFSTED inspected and judged as 'good with many excellent elements'. If you would like your child looked after by professional, qualified staff from Monday to Friday, then please contact school for details. Child care rates at St Luke's are extremely competitive and non-profit making in order to serve our families' needs. (Places available.)

### Robinwood Activity Holiday

The children in Y5 and Y6 will be visiting Robin Wood Activity Centre from Wednesday 12<sup>th</sup> July to Friday 14<sup>th</sup> July 2017 where they will experience the joys of outdoor activities including zip wire, nightline, canoeing and a whole host of fun activities. The cost is £210 and the next instalment of £60 is due on Friday 3<sup>rd</sup> February 2017.

### Packed Lunches



Please remember that school does not check the contents of packed lunch boxes and we can only advise parents on what constitutes a healthy lunch. The Health Team recommend a few sandwiches, a piece of fruit and a yoghurt with water as a drink. Please be aware that some of our children have nut allergies when you are preparing packed lunches for your child.

### Party Box Day

Thursday 19<sup>th</sup> January is New Year Party Box Day for £1 (free to all children in Reception to year 2 and children who are eligible for free school meals).

### Reception Applications for September 2017

The deadline for Reception Applications for 2017 is Sunday 15<sup>th</sup> January. If you have not already done so, you need to return your application by this date to Knowsley School Admissions Section or hand it to a member of the school office staff who will issue you with a receipt. Applications delivered through the school office will therefore need to be returned to school by this Friday 13<sup>th</sup> January.

### Severe Weather

In the event of severe weather, we will endeavour to keep the school open as long as it is safe to do so. We always keep in contact with Knowsley Education and local radio news if we have to close. We will text parents as early as possible if needed (please ensure we have your current mobile telephone number to add to our system, including updating us of any changes in numbers or addresses) If you are unsure whether school is open or not, please ring 477 8580 or you can check the school website:



[www.stluke.knowsley.sch.uk](http://www.stluke.knowsley.sch.uk)

Also, during extreme frost, ice or snow it is not possible or safe to open up the cycle path access to the rear of the school.

### Administrator Vacancy

St Luke's Parish Church is advertising for a part-time administrator – (15 hours per week, £8.50 per hour). Please contact Liverpool Archdiocesan Human Resources Department for details on 0151 522 1101 or download an application pack from the Archdiocese website. [www.liverpoolcatholic.org.uk/jobs](http://www.liverpoolcatholic.org.uk/jobs)

### Inset Day/ Half-term

The school will be closed to children on Friday 10<sup>th</sup> February for staff training. There will then be a one-week half-term break. The school will re-open on Monday 20<sup>th</sup> February at the normal times.

### Non-Uniform Day

Our next Non-Uniform Days will take place on Friday 27<sup>th</sup> January & Friday 24<sup>th</sup> February when the children will have the opportunity to wear their own clothes for a voluntary donation of £1 towards the School Levy.

### Dates for your Diary

|                                    |  |
|------------------------------------|--|
| Wednesday 11 <sup>th</sup> January | Reception hearing tests & Year 6 re-tests.   |
| Sunday 15 <sup>th</sup> January    | Deadline for Reception 2017 applications.  |
| Tuesday 17 <sup>th</sup> January   | Holy Communion meetings at 3.30 p.m. and 5.00 p.m. in Church                                 |
| Thursday 19 <sup>th</sup> January  | New Year Party Box Day £1  |
| Monday 23 <sup>rd</sup> January    | Year 3 & 4 gym competition at Kirkby Sports Centre 1.15–4 p.m. (selected pupils).            |
| Wednesday 25 <sup>th</sup> January | Girls football at Prescot Soccer Centre 1-3 p.m. (selected pupils).                          |
| Friday 27 <sup>th</sup> January    | Non- Uniform Day   |
| Monday 30 <sup>th</sup> January    | Year 5 & 6 basketball competition at St Edmund Arrowsmith 1.30 – 4.30 p.m (selected pupils). |
| Thursday 9 <sup>th</sup> February  | School finishes for half-term at the normal times.   |
| Friday 10 <sup>th</sup> February   | Inset Day (Children do not attend school on this day.)                                       |

THURSDAY 9<sup>TH</sup> FEBRUARY: SCHOOL CLOSING FOR CHILDREN AT 3.15PM

Monday 20<sup>th</sup> February: Children return to school at the normal times.

Thanking you for your continuing support.

Mr. A Crist  
Headteacher.