

# St Luke's Catholic Primary School Knowledge Organiser

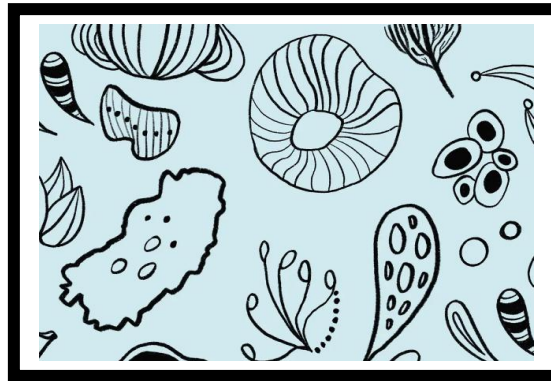
Art

Developing drawing skills

Year 3

## What I should already know

- Shapes can be organic (natural) and irregular.
- Patterns can be made using shapes.
- Lines can be used to fill shapes, make outlines, and to add detail, pattern and texture.
- Texture means 'what something feels like.'
- Thinking about the relative size of different parts helps artwork look balanced and recognisable.



## Vocabulary

Blend	To mix colours or shades together so they join smoothly.
Even tones	When the colour or shading looks the same all the way across.
Observation	Looking carefully at something to notice its details.
Organic	A shape or thing that looks natural, not straight or man-made.
Artist	An artist is a person who makes pictures or art.
Sketch	A sketch is a quick drawing made with light lines.
Geometric	Geometric means using shapes like circles, squares, and triangles.

## Technical knowledge and skills

- Using sketchbooks for a wider range of purposes, for example recording things using drawing and annotations, planning and taking next steps in a making process.
- Confidently using a range of materials and tools, selecting and using these appropriately with more independence.
- Develop direct observation, for example by using tonal shading and starting to apply an understanding of shape to communicate form.

## Sticky Knowledge

Three dimensional forms are either organic (natural) or geometric (mathematical shapes, like a cube).

Combining more complex lines and marks can represent texture, tones and patterns.

Texture in an artwork can be real (what the surface actually feels like) or a surface can be made to appear textured.

'Tone' in art means 'light and dark'.

